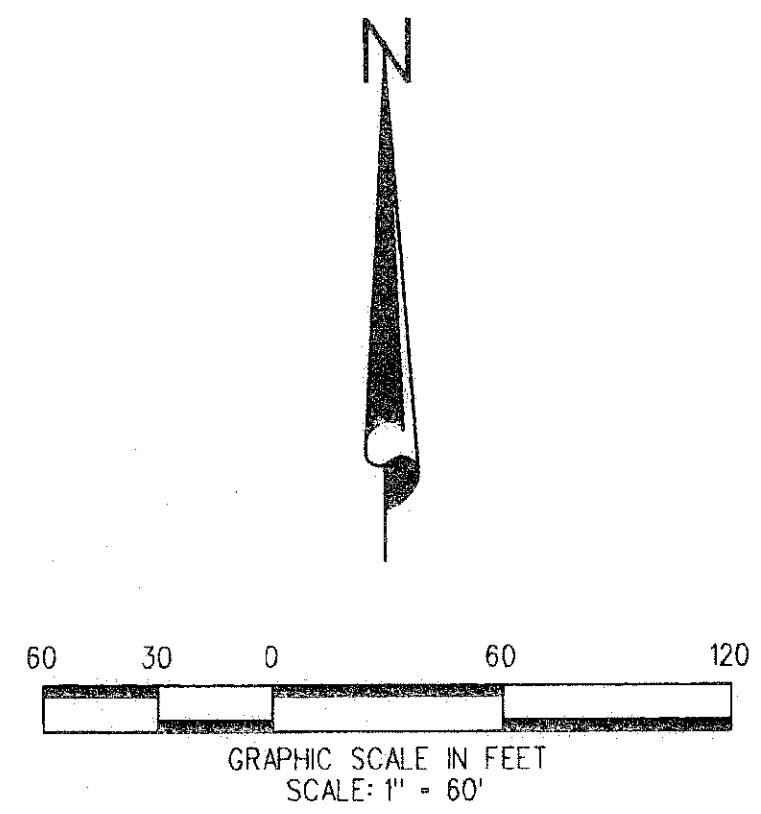
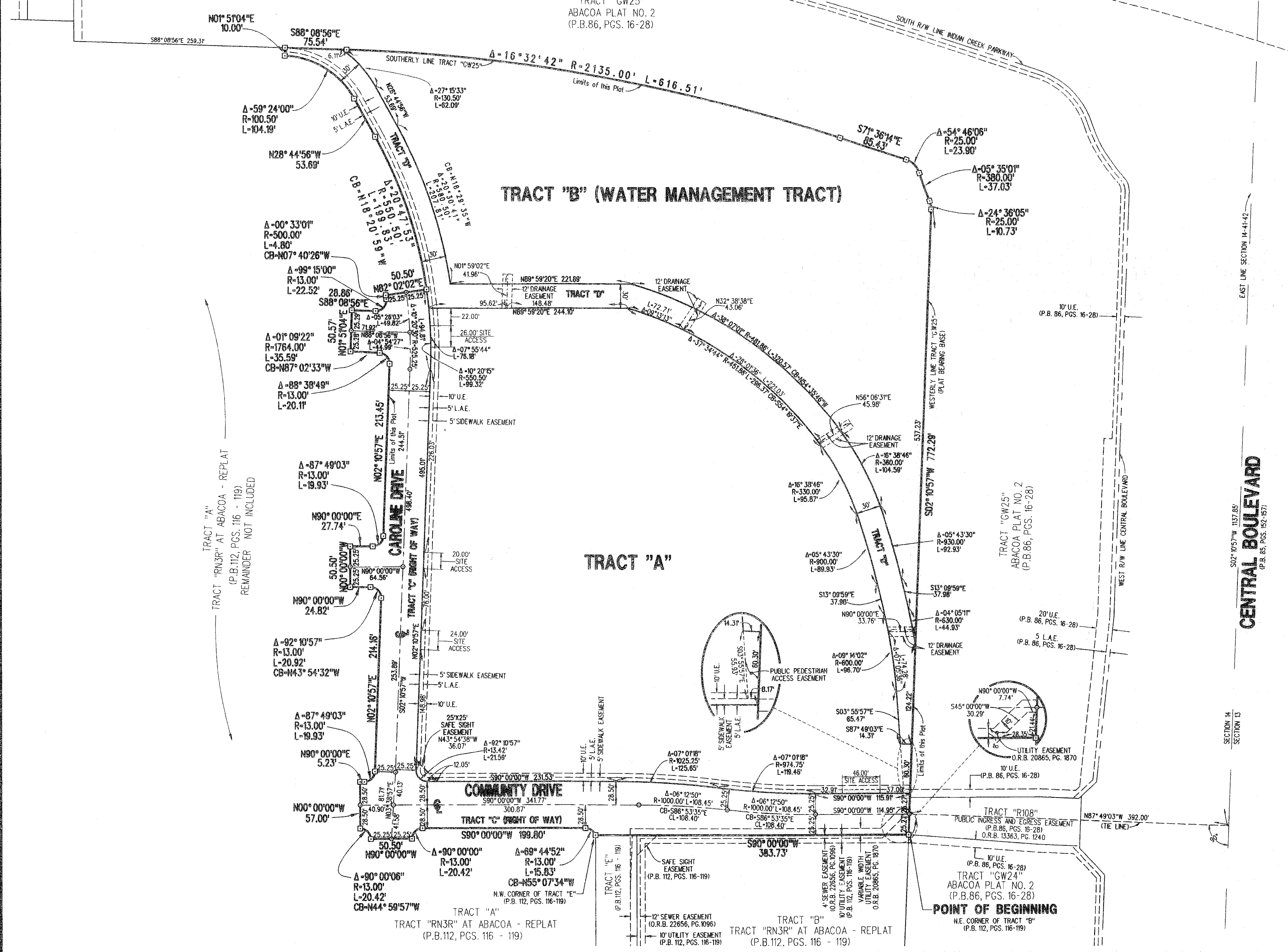
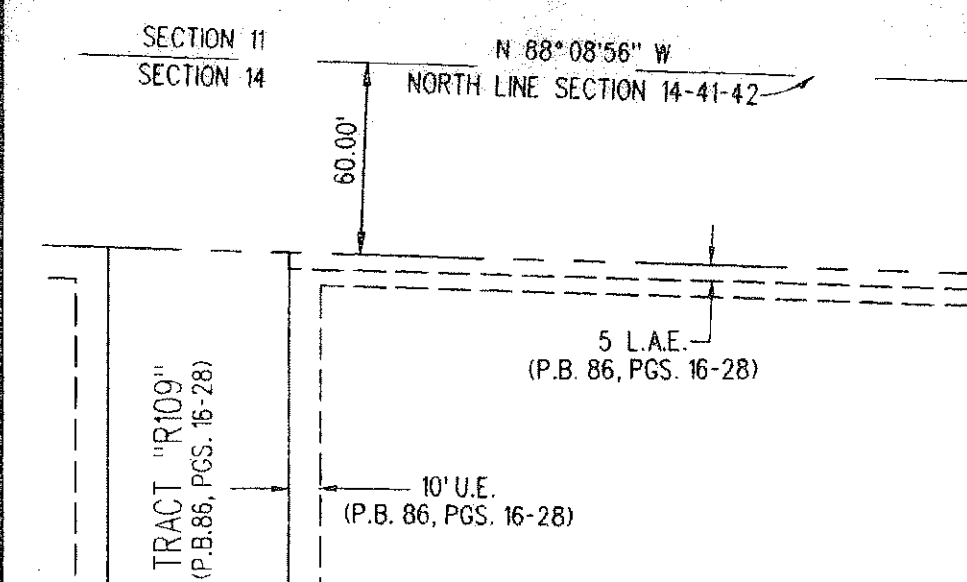
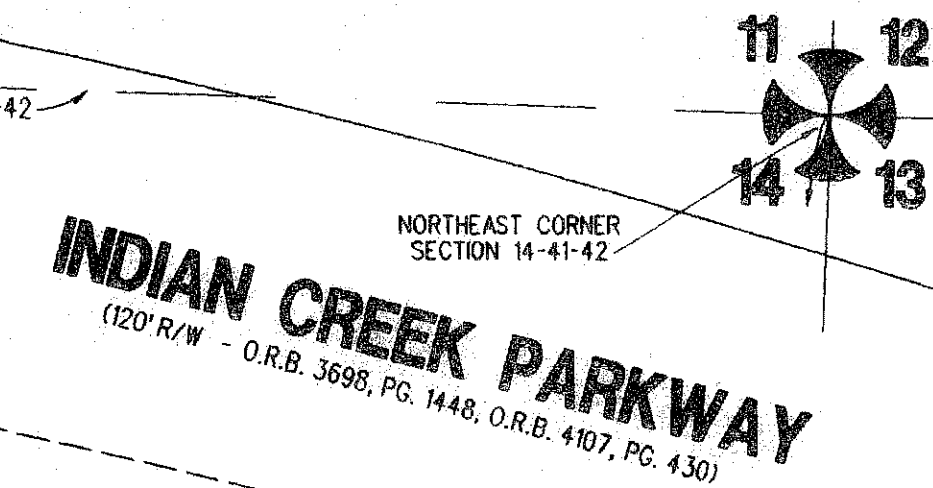


TRACT RN3R AT ABACOA - REPLAT NO. 2

BEING A REPLAT OF A PORTION OF TRACT "A", AS SHOWN ON THE PLAT OF TRACT RN3R AT ABACOA - REPLAT, AS RECORDED IN PLAT BOOK 112, PAGES 116 THROUGH 119, PUBLIC RECORDS OF PALM BEACH COUNTY, FLORIDA, LYING IN SECTION 14, TOWNSHIP 41 SOUTH, RANGE 42 EAST, TOWN OF JUPITER, PALM BEACH COUNTY, FLORIDA

OCTOBER 2009 SHEET 3 OF 3



TRACT "A"
TRACT "RN3R" AT ABACOA - REPLAT
(P.B. 112, PGS. 116 - 119)
REMAINDER NOT INCLUDED

CENTRAL BOULEVARD
S02° 05' 57" W 137.85'
(P.B. 86, PGS. 152-157)

LIDBERG LAND SURVEYING, INC.

LB4431			
675 West Indiantown Road, Suite 200, Jupiter, Florida 33458 TEL: 561-746-8454			
CAD:	K:\JUST \ 14142 \ 99-14 \ 05-057C-306 \ 05-057C-306.DGN		
REF:			
F.L.D.	FB.	PG.	JOB 05-157C-306
OFF. CASASUS			DATE MARCH 2009
CND. D.C.L.	SHEET 3	OF 3	DWG. 005-157P